



ISMF WORLD CUP BORMIO



SKI MOUNTAINEERING
Milano Cortina 2026 Test Event
21-23 February 2025

ORGANISING COMMITTEE



Dear Skimo friends,

Welcome on the road to Milano Cortina 2026!

Fondazione Milano Cortina 2026, as LOC, and the Italian Ski Federation (FISI) are pleased to invite your national teams to participate in the ISMF World Cup 2024/2025 stage to be hosted in Bormio, Italy, on 22 and 23 February 2025.

The event will be held in accordance with the ISMF 2024-25 Rules & Regulations. All ISMF National Members are invited to participate in the competition.

To help you better organise your participation, the Local Organising Committee has prepared the attached information for your reference. We hope to see you soon in Bormio!

Kind regards,

Davide Canclini

Sport Manager Ski Mountaineering
Fondazione Milano Cortina 2026

CONTENTS



01.

Deadlines

02.

**Local Organising
Committee**

03.

Event Program

04.

Venue Map

05.

Accommodation

06.

**Race Office and
Accreditation**

07.

Sprint
*Race Track
Height Profile*

08.

Mixed Relay
*Race Track
Height Profile*

09.

Field Of Play
*Warm-up Area
Team Area*

10.

**ISMF Rules
and Guidelines**

11.

Medical Services

12.

Prize Money

13.

Transportation

14.

**Ski Mountaineering
tracks for training
in Alta Valtellina**

1. DEADLINES

REGISTRATION

Until 17 February at 11:59 AM CET

In accordance with ISMF registration will close on Monday 17 February at 11:59 AM CET. After that date, registrations will be no longer possible.

Before registering for any ISMF World Cup, athletes must have their own valid ISMF licence.

Registration has to be submitted through the ISMF official website:
<https://www.dataskimo.org/index.php>.

TEAM CONFIRMATION

Until 22 February 16:30 CET

The final composition of the teams for the Mixed Relay race should be communicated on the WhatsApp group named **“Bormio WC – National Teams”** no later than Saturday 22 February 2025 at 16:30 CET.

2. LOCAL ORGANISING COMMITTEE

Event General Manager
GIOELE CARAVELLO

Sport Manager / Race Director
DAVIDE CANCLINI

Sport Assistant Manager, Accreditation & Race Office
MICHELA MARTINELLI

Venue Press Manager
GIUDITTA CAMPOCCIA

Photographer Manager
FEDERICA ROSA

WARM-UP
Road to **26**
PROGRAMME



3. EVENT PROGRAM

Further information, including the detailed official competition schedule, bib distribution, etc., will be announced later.

21 FEB

4.30 p.m. Team Captain Meeting

6 p.m. Opening Ceremony and
Top5 bib presentation
Sprint

22 FEB

8.50 a.m. to 4.15 p.m. Sprint Race

23 FEB


9 a.m. to 1 p.m. Mixed Relay Race

Departure

IMPORTANT

The program may be subject to change depending on television requirements.
Any changes will be communicated in advance.

4. VENUE MAP

- 1 Race Area
- 2 SSC (Field of Play)
- 3 Race Office, Accreditation Centre, Media/Press Centre, Team Captain Meeting
- P 4 Reserved Underground Parking
- 5 Opening Ceremony and TOP5 Sprint bib presentation
- 6 Tourist Office
-  Public transport
- P Parking



5. **ACCOMMODATION**

Accommodation for athletes and team officials is provided in hotels and apartments located in Bormio and nearby villages.

For information or reservations, please contact **Bormio Booking** at the references below:

BORMIO BOOKING SRL

Phone: +39 0342 903300

E-mail: booking@bormio.eu

Website: Bormio, Wellness Mountain | Official Website

6. RACE OFFICE AND ACCREDITATION

RACE OFFICE AND GENERAL INFORMATION

skimo.raceoffice@milanocortina2026.org

ACCOMMODATION

booking@bormio.eu

OPENING HOURS

From 19 to 23 February 2025

19/21 February: From 9 a.m. to 5 p.m.

22 February: From 7 a.m. to 7 p.m.

23 February: From 7 a.m. to 3 p.m.

- The Team Captain Meeting will take place in the Media Centre.
- The accreditation desk is located by the Race Office.
- Any changes or corrections will be notified by the Race Office.



07. SPRINT

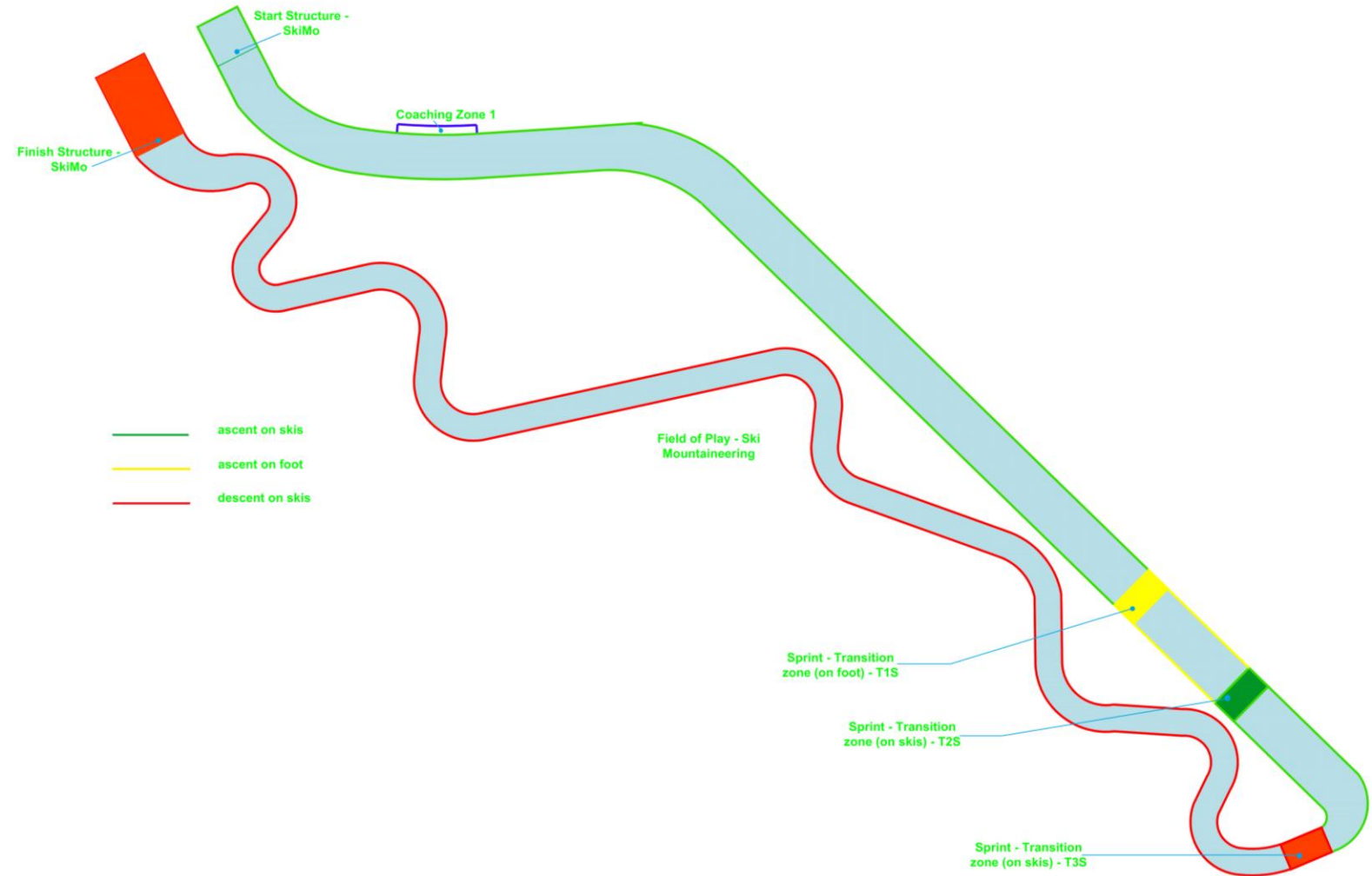
Race Track

Height Profile

7. SPRINT

Race Track

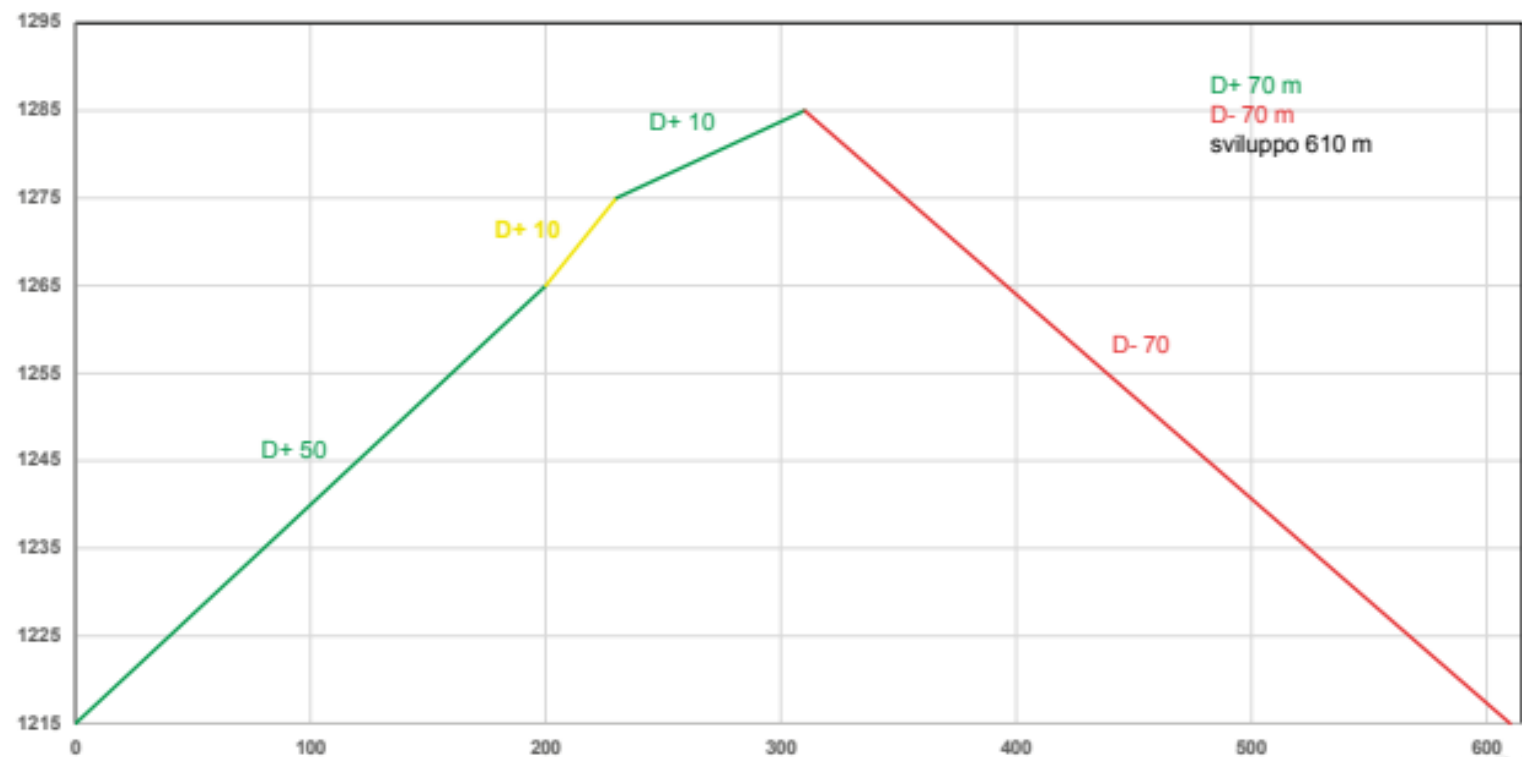
- Ascent on Skis
- Ascent on Foot
- Descent on Skis
- Transition Zone
- Transition Zone
- Transition Zone
- Coaching Zone



7. SPRINT

Height Profile

START	1.215 m
FINISH	1.215 m
HIGHEST POINT	1.285 m
ASCENT	70 m
DESCENT	70 m
LENGHT	610 m






08. MIXED RELAY

Race Track

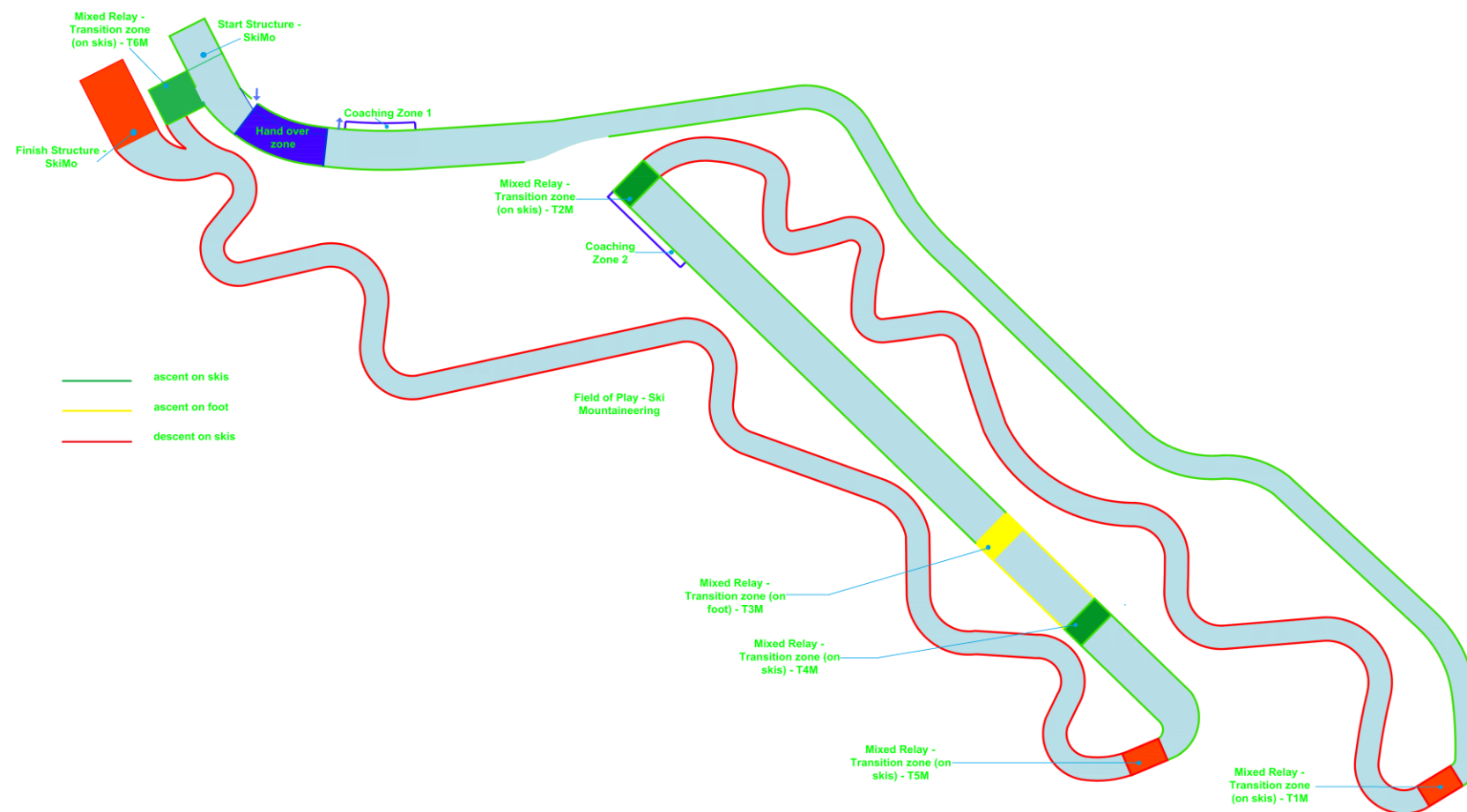
Height Profile

8. MIXED RELAY

Race Track

-  Ascent on Skis
-  Ascent on Foot
-  Descent on Skis

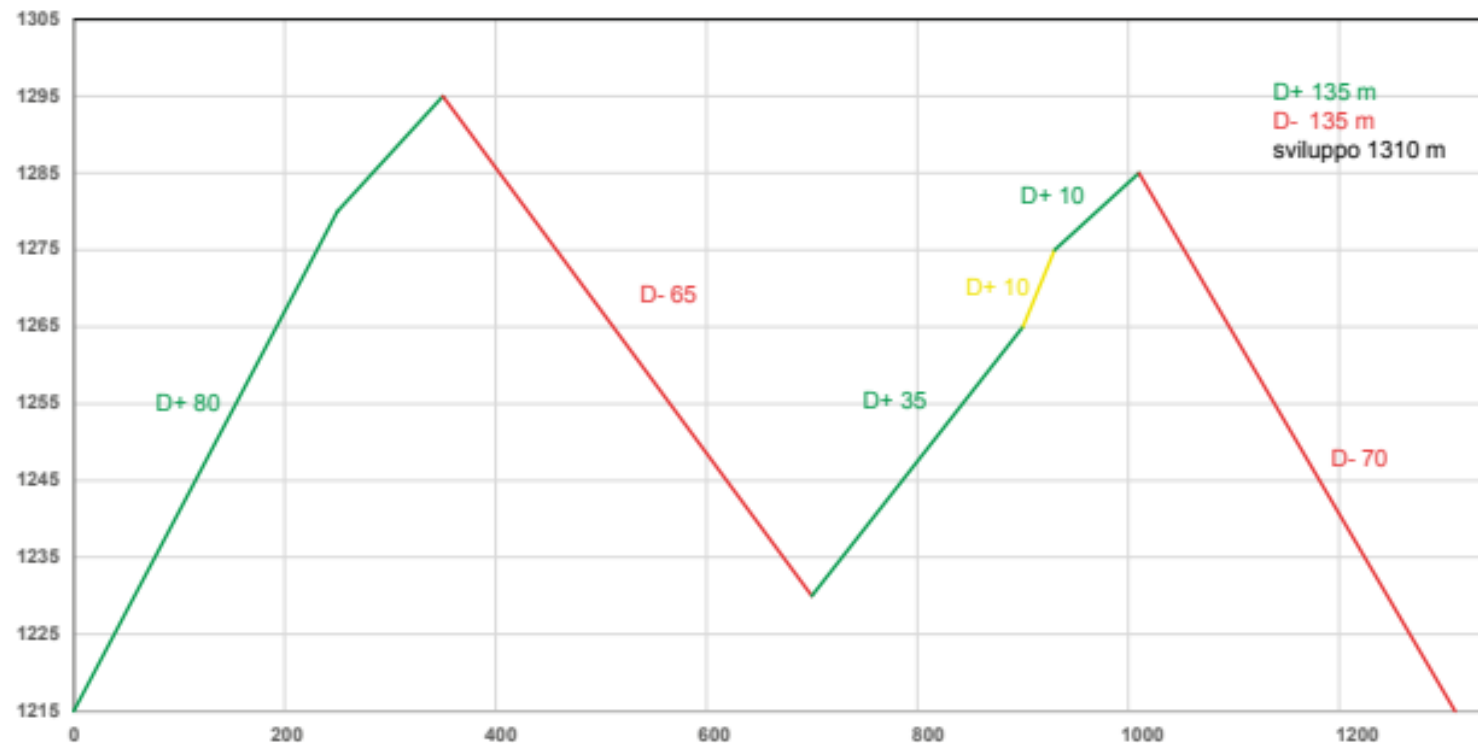
-  Transition Zone
-  Transition Zone
-  Transition Zone
-  Handover Zone
-  Coaching Zone



8. MIXED RELAY

Height Profile

START	1.215 m
FINISH AREA	1.215 m
HIGHEST POINT	1.295 m
ASCENT	135 m
DESCENT	135 m
LENGHT	1.310 m



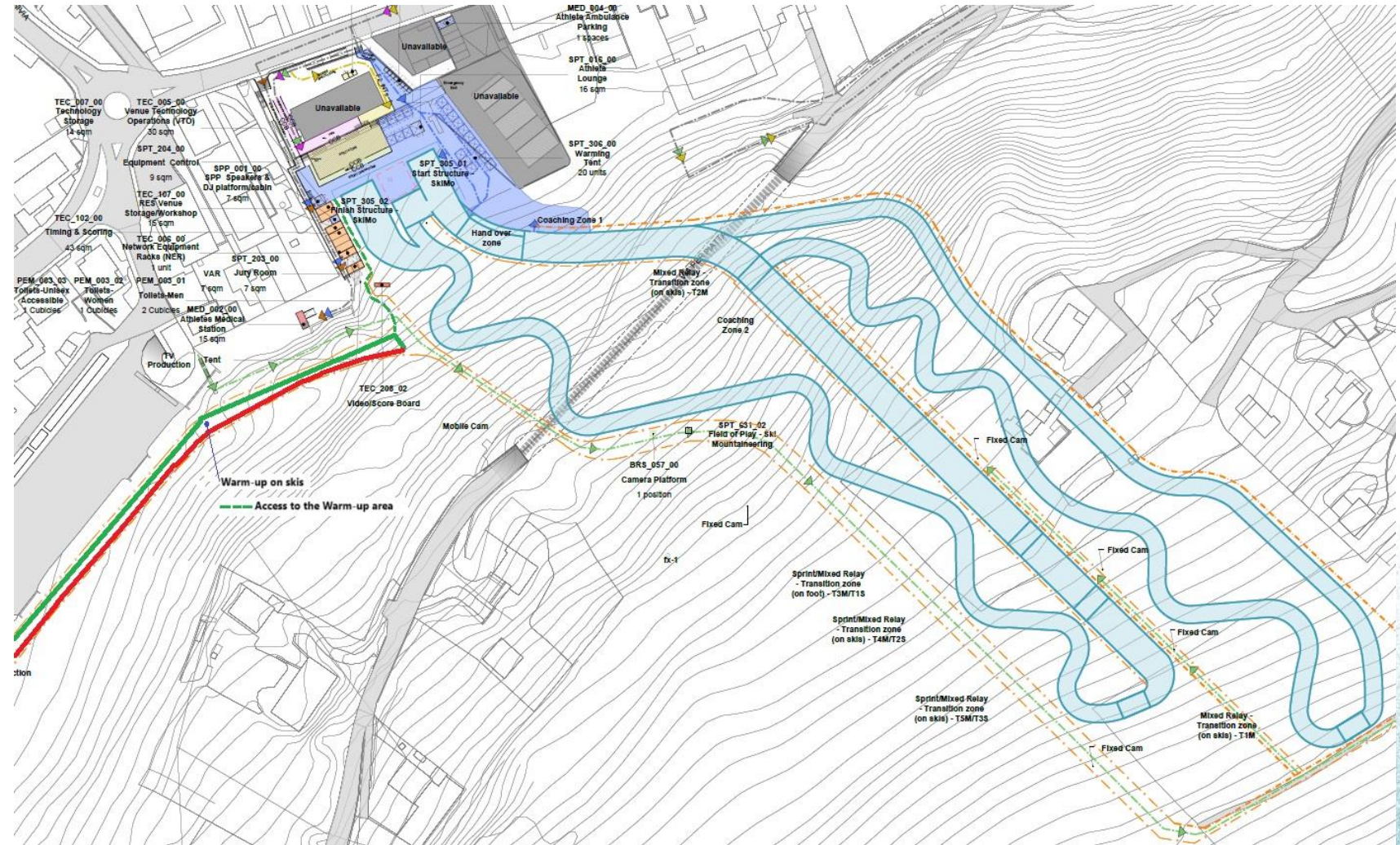
09. FIELD OF PLAY

Warm-up Area

Team Area

9. FIELD OF PLAY

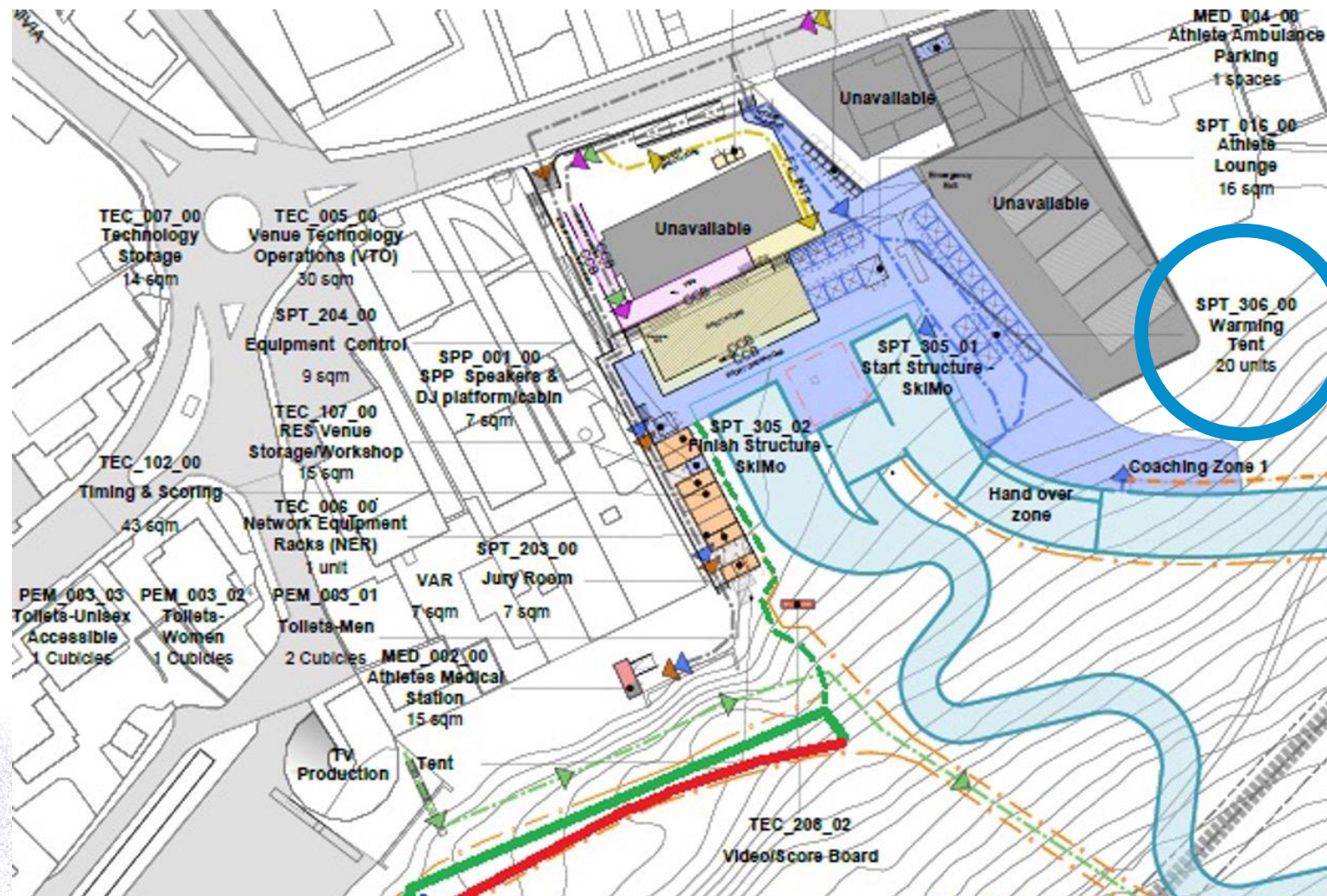
Warm-up Area



The Warm-up area on skis is located on the skiweg leading to the gondola Bormio-Bormio 2000.

9. FIELD OF PLAY

Team Area



The tents for the Team Area are provided by the LOC.

No tents from National Teams to be used.

10. ISMF RULES & GUIDELINES



REGISTRATIONS

Entries will be accepted from ISMF National Members following ISMF rules & guidelines.

ANTI-DOPING

Anti-Doping control may be conducted for each race and gender.

11. MEDICAL SERVICES

THE RACE COURSE

6 First aid CNSAS technicians
1 First aid doctor
1 Nursing Team
1 Ambulance
1 Medical Station mobile

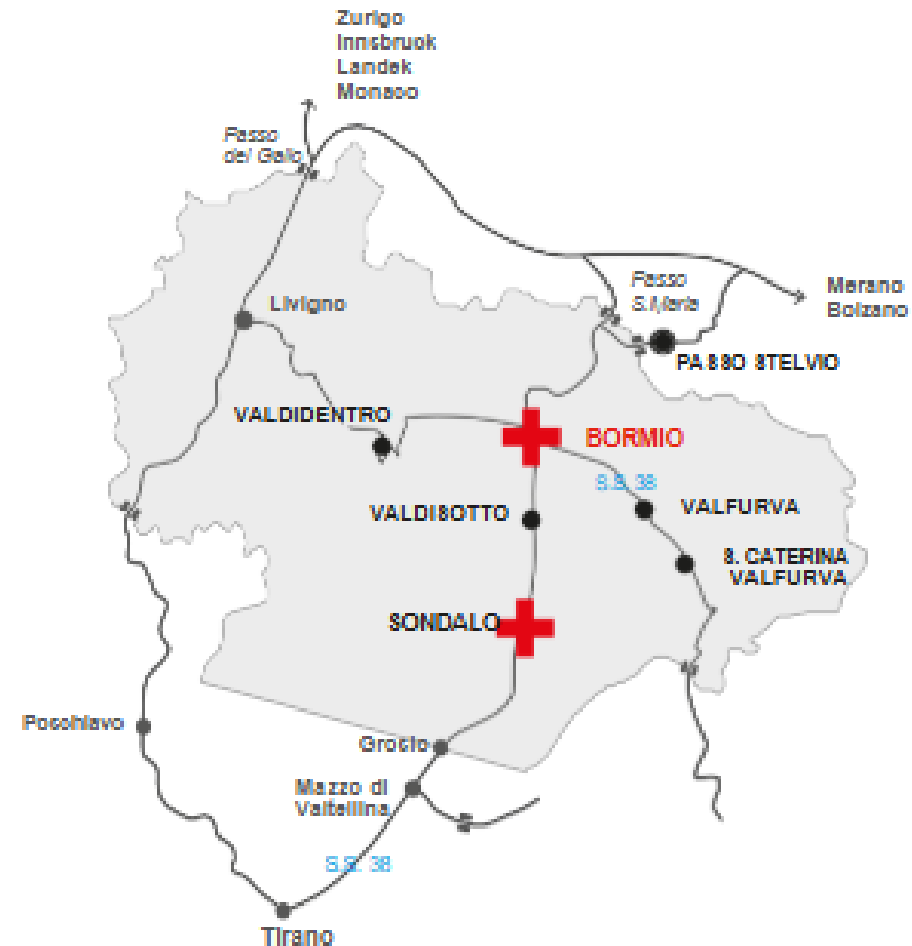
Pronto Soccorso Bormio

The emergency room is located in Bormio
at the Casa di Comunità, Via Agoi, 8
1,8 km from the race course.
tel.+39 0342 909152

Ospedale Morelli Sondalo

The nearest hospital is located in the town
of Sondalo, 20 km drive / 5 minutes by helicopter
tel. +39 0342 808111 or 118

*Teams are responsible for covering their own
health costs, including in case of emergency.*



12. CEREMONIES

21 FEB

6 p.m. Opening Ceremony and TOP5 bib presentation will be held in Piazza Kuerc.

22 FEB

4.15 p.m. **SPRINT RACE**
Flower + Award Ceremony
at Ski Stadium (Stelvio Ski Center),
in front of the spectator stands.

23 FEB

12.10 a.m. **MIXED RELAY RACE**
Flower + Award Ceremony
at Ski Stadium (Stelvio Ski Center),
in front of the spectator stands.



13. PRIZE MONEY

In addition to the trophies and gifts presented by the LOC, the athletes will receive prize money.

The LOC shall share equally the total amount of such prize money. The total amount to be paid will be € 4,500.- EUR per race and category.

The winners will receive their prize money via bank transfer. In order for the payment to be processed, winners must provide valid bank details, identification and all applicable tax documentation. To claim their prize, athletes must go to the Race Office, immediately after the awards ceremony on the day of the finals.

Prize are paid out to the top five competitors in individual competitions and the top five teams in team competitions.

The athletes are required to participate in the Official Ceremonies for the respective races.

BREAKDOWN OF THE TOTAL PRIZE MONEY

EUR 4,500.- Sprint Race male
 EUR 4,500.- Sprint Race female
 EUR 4,500.- Mixed Relay Race

PRIZE MONEY	SPRINT	MIXED RELAY
1 st SM/SW	1.500,00 EUR	1.500,00 EUR*
2 nd SM/SW	1.200,00 EUR	1.200,00 EUR*
3 rd SM/SW	800,00 EUR	800,00 EUR*
4 th SM/SW	600,00 EUR	600,00 EUR*
5 th SM/SW	400,00 EUR	400,00 EUR*

** The amount has to be considered per team.*

14. TRANSPORTATION

How to reach Bormio

BY CAR

S.S. 38
From south
Lecco, Colico, Sondrio,
Tirano, Bormio

S.S. 38
From north
Bolzano, Merano,
Passo Stelvio, Bormio
Closed in winter

S.S. 39
Aprica: Brescia, Edolo, Aprica,
Tresenda, Bormio

N. 27
Zernez (CH): St. Moritz, Zernez,
Livigno, Bormio

BY BUS

BUS PEREGO
Tirano, Bormio
www.busperego.com

BUS SILVESTRI
Alta Valtellina, Zernez
Annual www.silvestribus.it
www.rail.ch

BUS SILVESTRI
Alta Valtellina, Pontresina
Summer
www.silvestribus.it
www.rail.ch

BY TRAIN

TRENORD
From
Milano (Staz. Centrale)
Line
Milano - Sondrio/Tirano
(2 / 2,30 h.)
www.trenord.it
www.trenitalia.it

FERROVIA RETICA
From
Coira - St. Moritz (CH)
Line
Coira - St. Moritz - Tirano
(2.30 / 4 h.)
www.rhb.ch

BY PLANE

Milano Orio Al Serio
AIRPORT (IT) (170 Km)

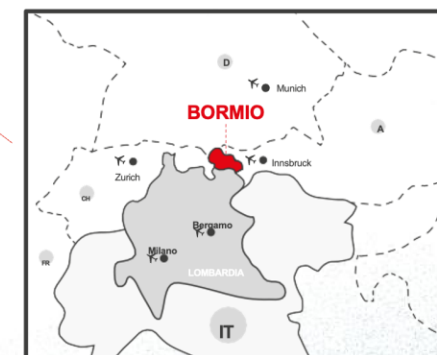
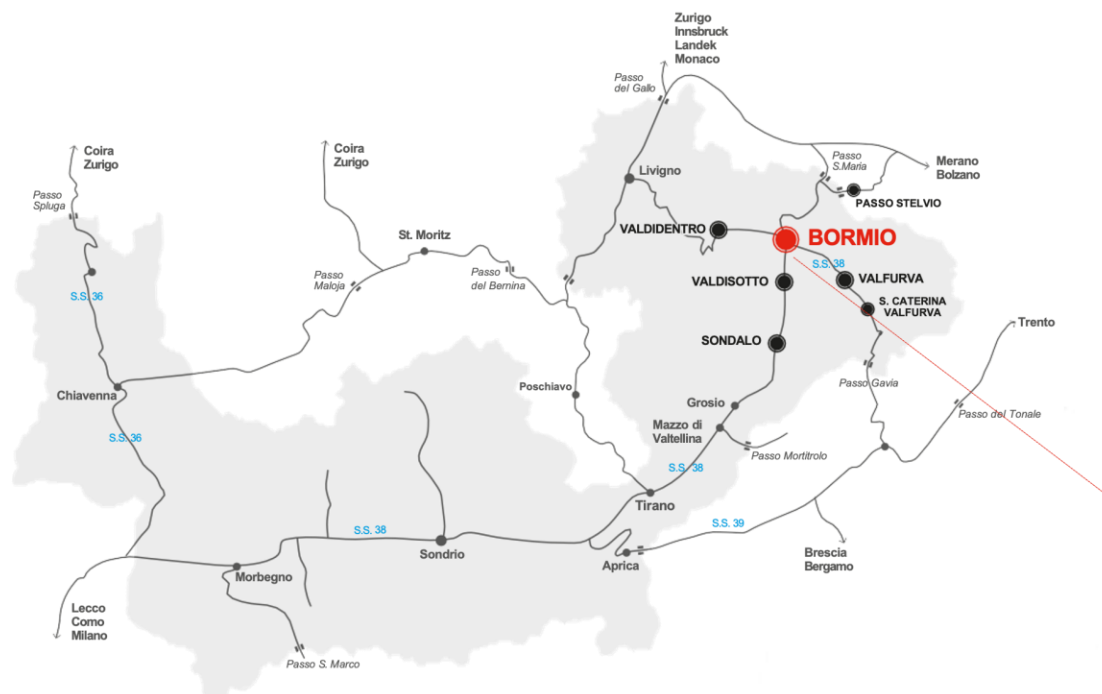
Milano Linate
AIRPORT (IT) (200 Km)

Milano Malpensa
AIRPORT (IT) (220 Km)

Zürich
AIRPORT (CH) (250 Km)

Innsbruck
AIRPORT (AUT) (215 Km)

Munich
AIRPORT (GER) (400 Km)



15. SKI MOUNTAINEERING TRACKS FOR TRAINING IN ALTA VALTELLINA

STELVIO NATURAL SKIMO

At the following link, you can find a selection of ski mountaineering training tracks available in the villages surrounding Bormio: [Stelvio natural Skimo](#)

BORMIO 2000 – LA ROCCA

This ski mountaineering track is located near Bormio 2000 and allows for an ascent to Cimino without crossing the slopes: [Bormio 2000 – La Rocca](#)

For any additional information please contact the Bormio Tourist Office ([Bormio, Wellness Mountain | Official Website](#))

***Ascending on the slopes is prohibited,
and violators may face penalties
(art. 24 della Legge 40/21).***

By Italian law mandatory insurance covering civil liability for damages or injuries caused to third parties is required to use the slopes (Art 30 D.Lgs 40/2021). We highly suggest you to use the helmet on the slopes (mandatory under the age 18).



***THANK
YOU***